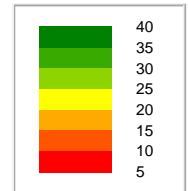
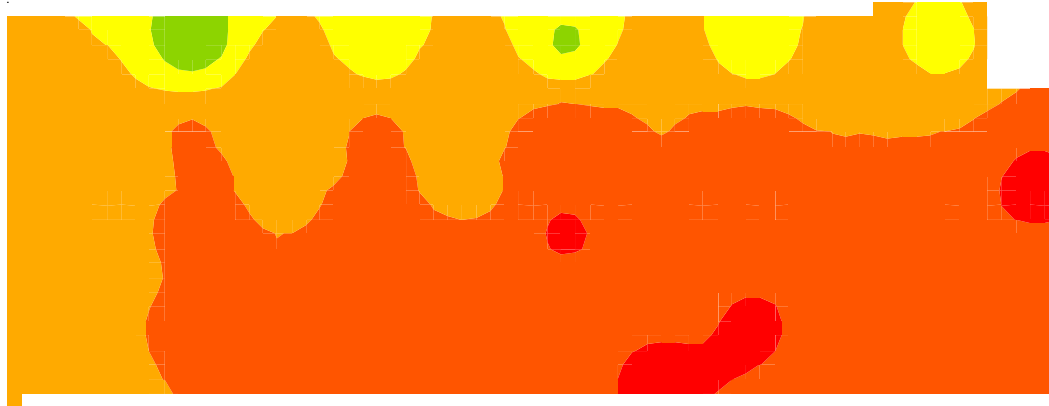
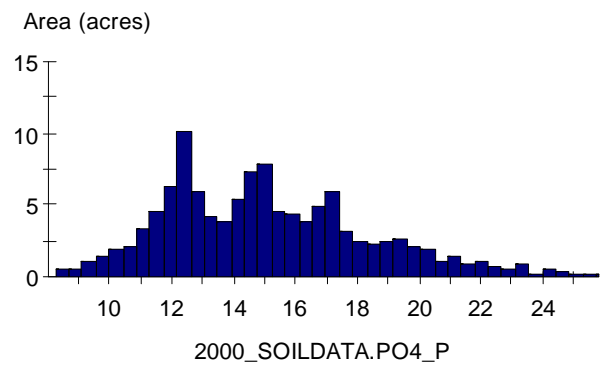


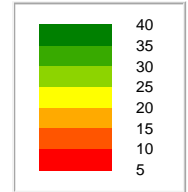
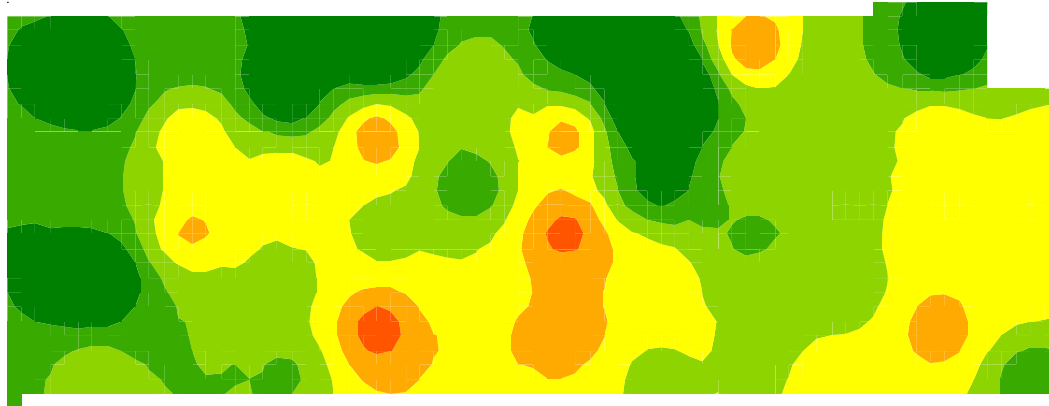
2000\_SOILDATA.PO4\_P



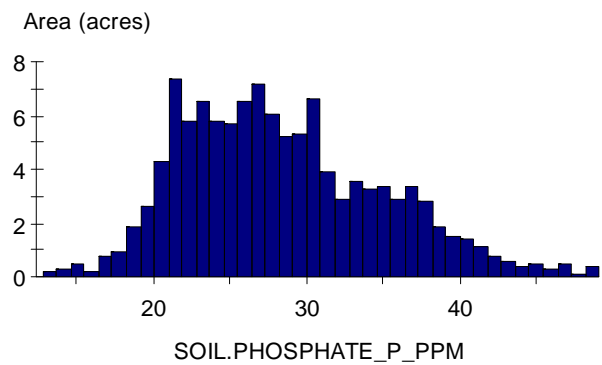
Min:	8.02
Max:	29.9
Range:	21.9
Mean:	15
Median:	14.6
Variance:	12.1
Std Dev:	3.49
Area:	115 acres



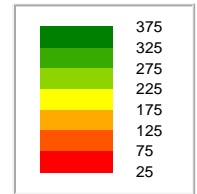
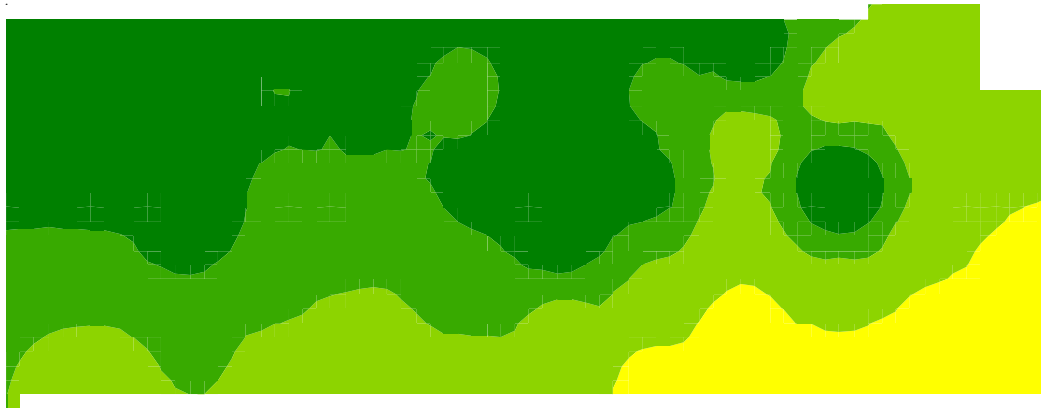
SOIL.PHOSPHATE\_P\_PPM



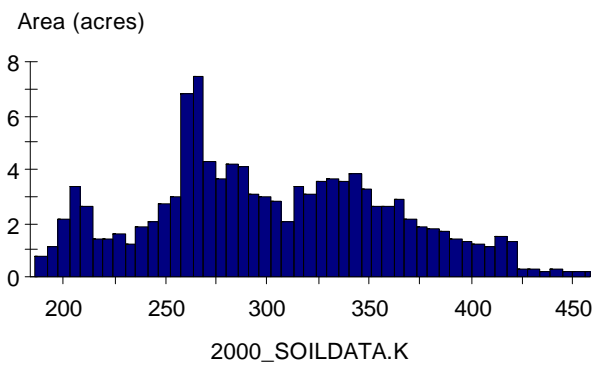
Min:	12.3
Max:	57.8
Range:	45.5
Mean:	28.1
Median:	27.1
Variance:	46.1
Std Dev:	6.79
Area:	115 acres



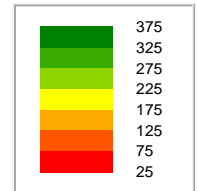
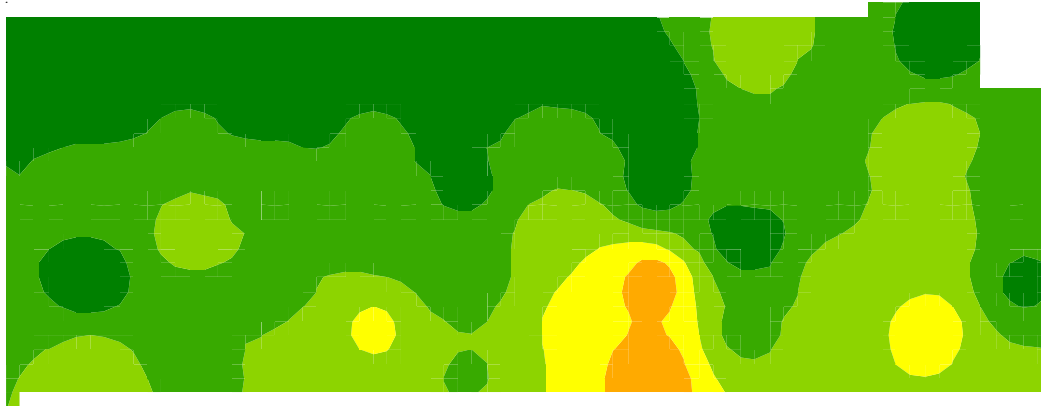
2000\_SOILDATA.K



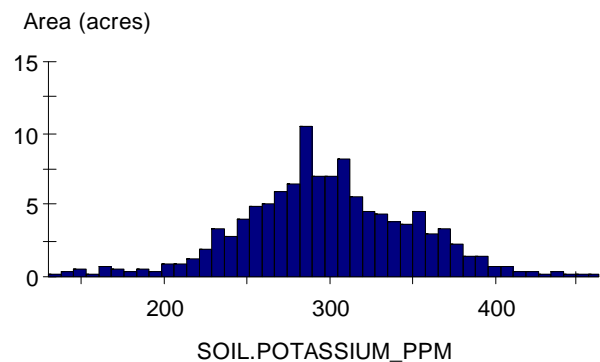
Min:	184
Max:	458
Range:	275
Mean:	299
Median:	292
Variance:	3,466
Std Dev:	58.9
Area:	115 acres



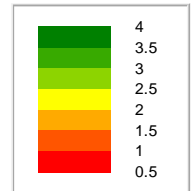
SOIL.POTASSIUM\_PPM



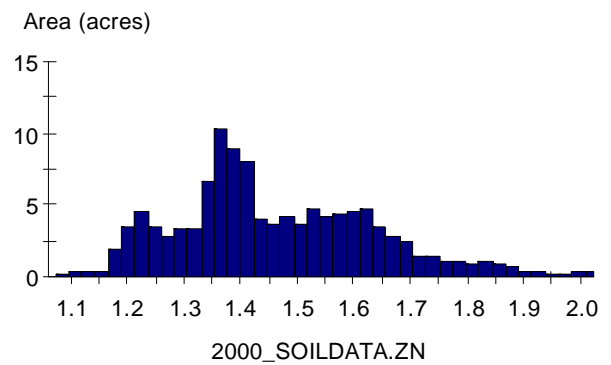
Min:	127
Max:	507
Range:	380
Mean:	297
Median:	293
Variance:	2,879
Std Dev:	53.7
Area:	115 acres



2000\_SOILDATA.ZN



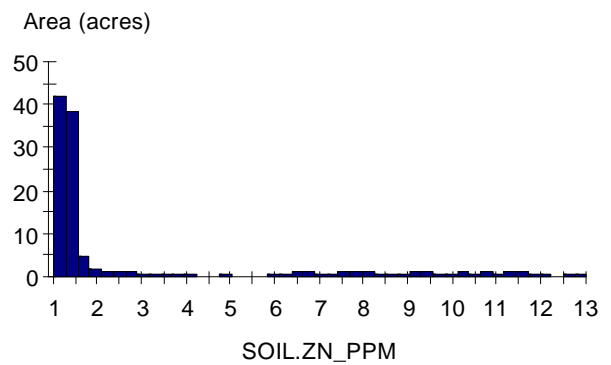
Min:	1.06
Max:	2.23
Range:	1.17
Mean:	1.45
Median:	1.41
Variance:	0.0337
Std Dev:	0.184
Area:	115 acres



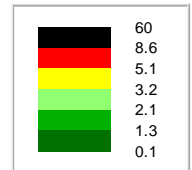
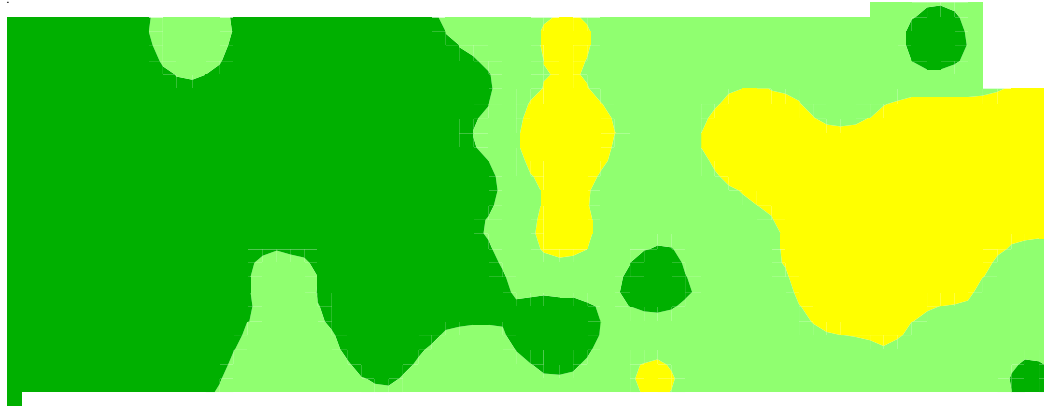
SOIL.ZN\_PPM



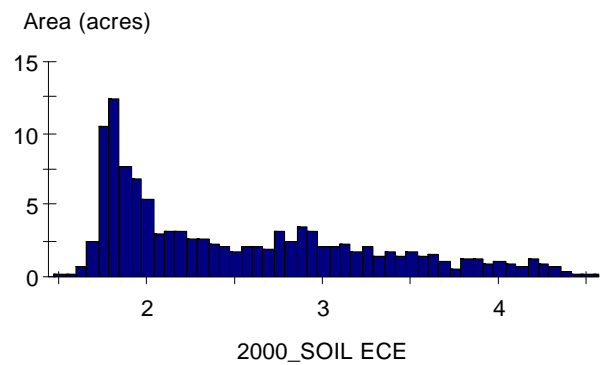
Min:	0.902
Max:	14.2
Range:	13.3
Mean:	2.85
Median:	1.24
Variance:	10.7
Std Dev:	3.28
Area:	115 acres



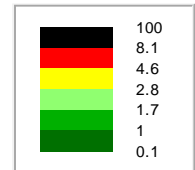
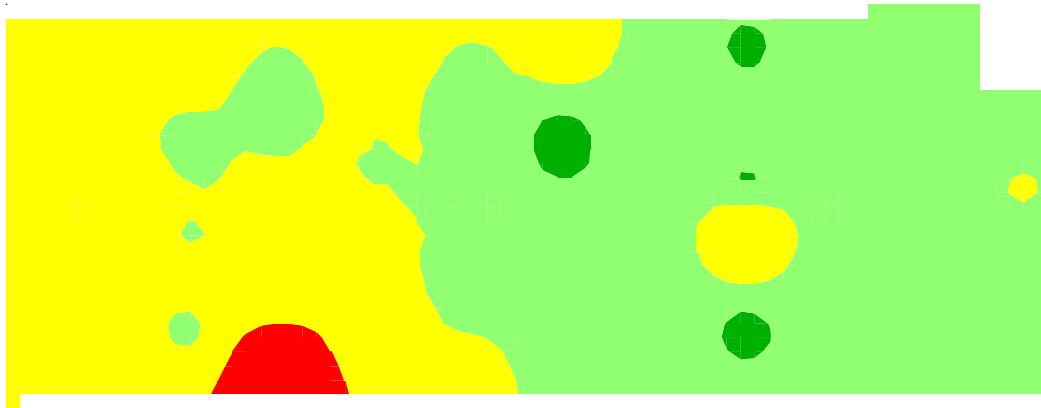
2000\_SOIL ECE



Min:	1.45
Max:	4.57
Range:	3.13
Mean:	2.49
Median:	2.25
Variance:	0.547
Std Dev:	0.739
Area:	115 acres



2001 SOIL ECE



Min:	1.28
Max:	7.43
Range:	6.15
Mean:	2.83
Median:	2.64
Variance:	0.624
Std Dev:	0.79
Area:	115 acres

